



Cable Break Device

25455 25456

Index

1. Terms and conditions.....	2
2. Symbols.....	2
3. General warnings.....	2
4. Safety requirements	2
5. Uses	2
6. Track specifications.....	3
7. Fasteners	3
8. Descriptions	3
9. Principle of operation	4
10. Installation	5
11. Installation of the E-switch (25445)	7
12. Testing / Maintenance.....	7
13. Replacement after a cable break safety device has been activated.....	7
14. Certificate number:	7

1. Terms and conditions

Our general conditions of delivery and payments are applicable on all our offers, agreements or subsequent revisions. A copy of our terms and conditions is available on request or can be downloaded from our website: www.doco-international.com

Subject to changes

2. Symbols



Danger / Attention

3. General warnings

This manual has been prepared for use by qualified personnel and therefore it is not suitable for trainees or "DIYers". If you are in doubt about the installation and/or maintenance of this product, please contact DOCO International. To avoid severe personal injury, please carefully read and observe all indications and warnings in this manual.

- This manual describes the installation, use and maintenance of the cable break safety device 25455.
- This cable break safety device has been designed in accordance with the latest European standards; however, you should check whether this standard corresponds with

- your local national standard.
- All measurements are stated in millimetres unless otherwise specified.
- This manual should be kept in a safe place.
- It may be subject to technical changes without any written notice.
- If the cable break safety device has been activated, it should be replaced every time this occurs.

4. Safety requirements

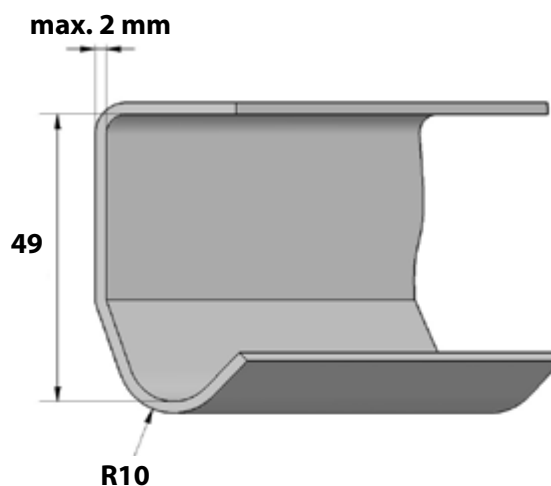
- This cable break safety device may only be installed by qualified personnel.
- Make sure that the power is switched off and remains switched off while electrical work is carried out!
- Adding or leaving out parts can negatively impact the operation and safety of the door and is therefore strongly discouraged!
- With regard to the installation, all references in this manual to left/right are always taken to mean as viewed from the installation location, i.e. from the inside looking out.
- Never use the sectional door in the event of visible damage to the cable break safety device.
- Secure the installation/maintenance location with safety ribbon to keep others (especially children!) at a distance.
- Maintenance must only be performed by a qualified company and/or qualified personnel.

5. Uses

This cable break safety device can be used on manually-operated, chain-operated and electrically-operated industrial doors. The cable break safety device is suitable for sectional overhead doors with a minimum weight of 40 kg and a maximum weight of 450 kg. The door must be fitted with 2 lifting cables. The cable width should be a minimum of $\varnothing 4\text{mm}$ and a maximum of $\varnothing 5\text{mm}$. A cable break safety device should be installed on each lifting cable. The diameter of the shaft should be $\varnothing 11\text{ mm}$. The radius of the loop should be at least 300 mm.

6. Track specifications

- Material: Wnr: 1.0226 / DX51
- Maximum hardness permitted: 90 Rockwell B
- Material thickness: 1.5 to 2 mm
- Stainless steel is not permitted
- Track type DOCO



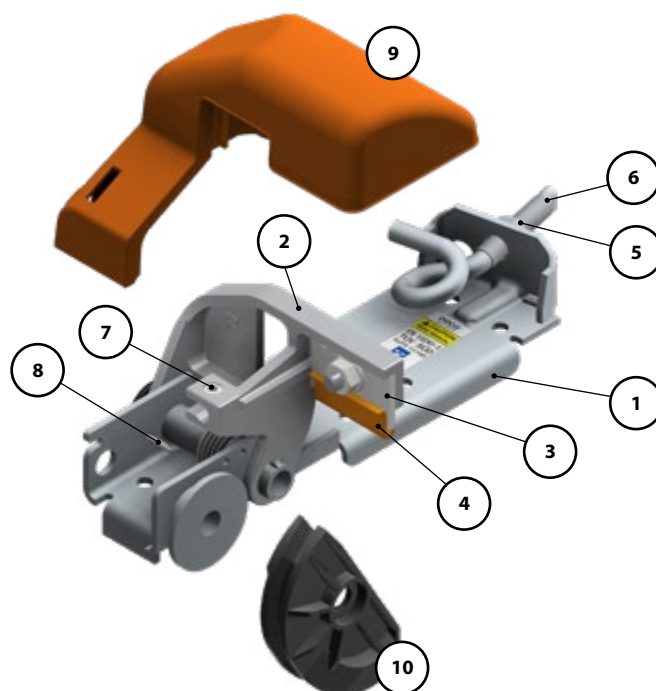
7. Fasteners

The fastener required to install this cable break safety device onto the door panel is not included! It is the responsibility of the installer to make sure that the installation location is strong enough, from

a structural point of view, to support the cable break safety device. The installer is also responsible for using the correct fasteners. The self-tapping screw ST 6.3 x 35 (DOCO:14017) is used in this manual.

8. Descriptions

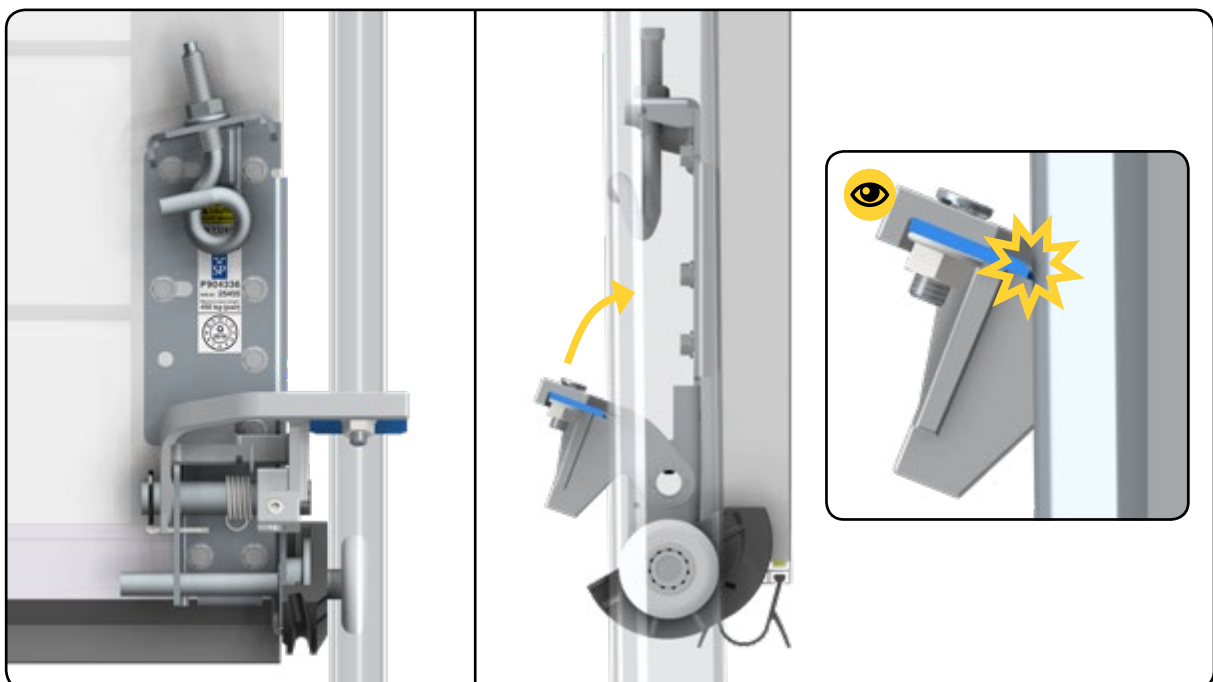
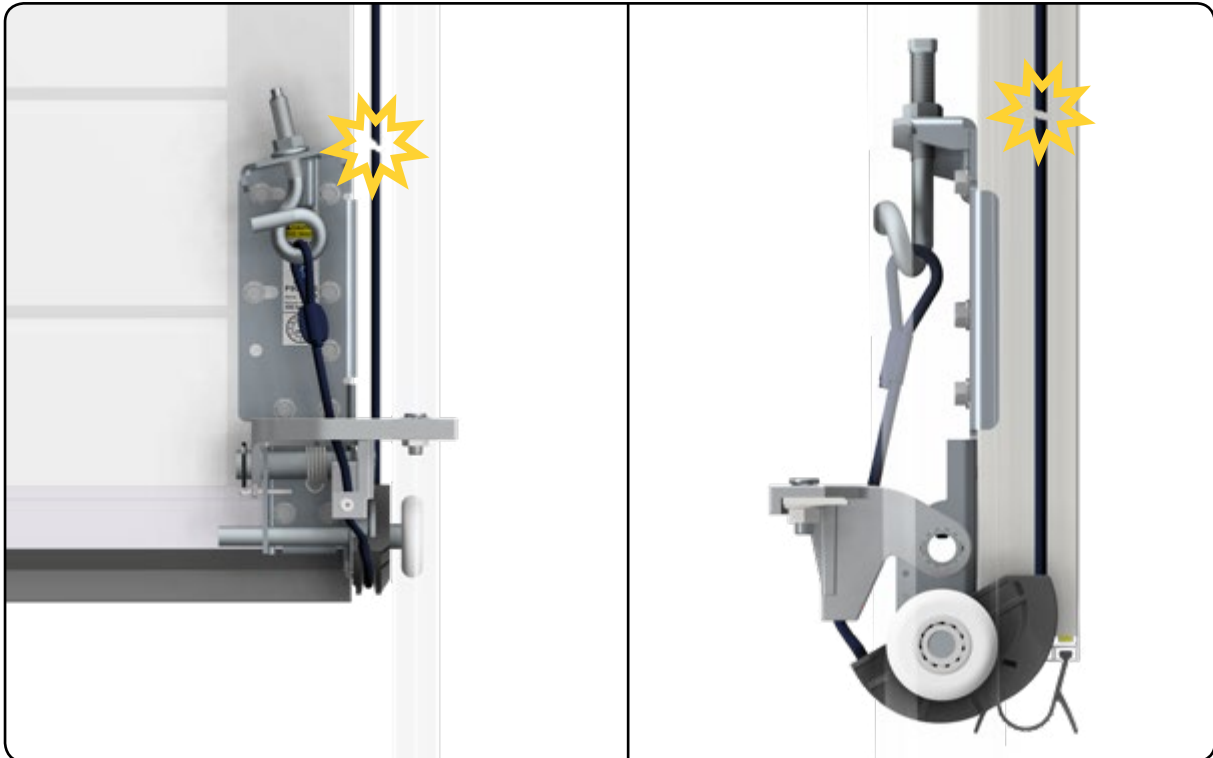
- | | |
|-----------------------|-----------------------|
| 1. Installation plate | 6. Adjustable hook |
| 2. Rotation module | 7. Set screw |
| 3. Knife | 8. Split pin |
| 4. Knife protection | 9. Cover |
| 5. Adjustable nut | 10. Cable guide 25456 |



9. Principle of operation

The tightening of the springs will put tension on the cables. This tension ensures that module two will be in the open position. The knife (3) should be free from the track rails. In the event of a cable break, the cable tension will be released. This will cause the module to turn due to spring tension. The knife

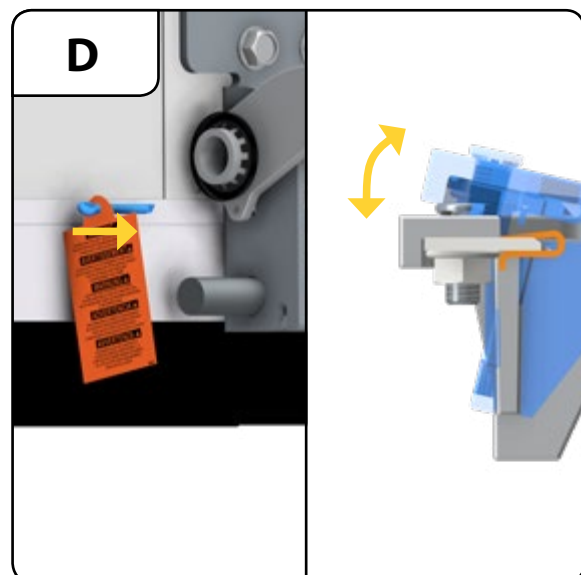
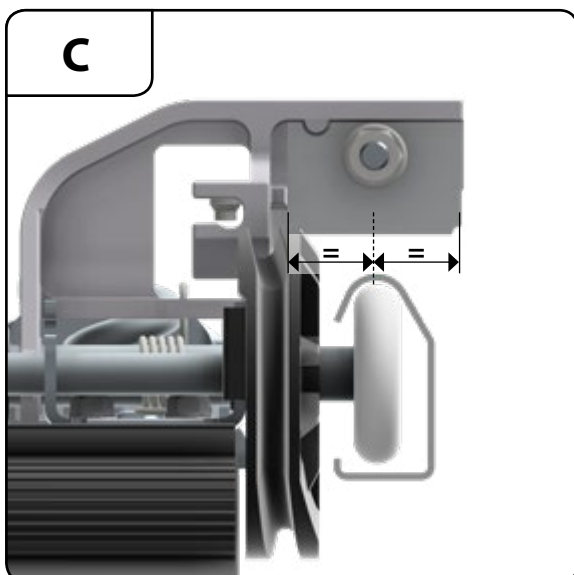
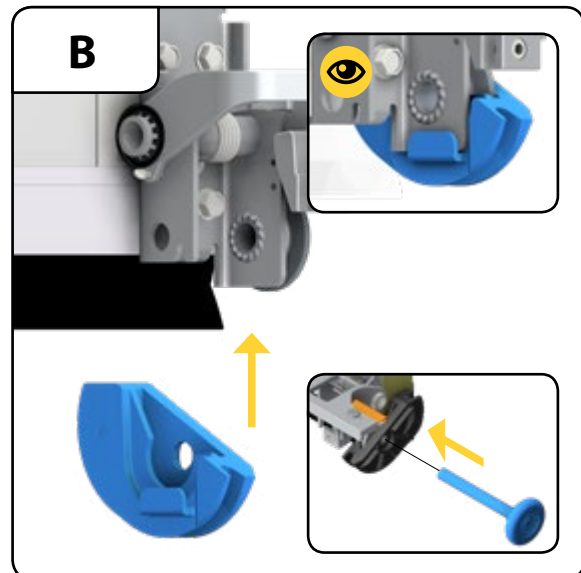
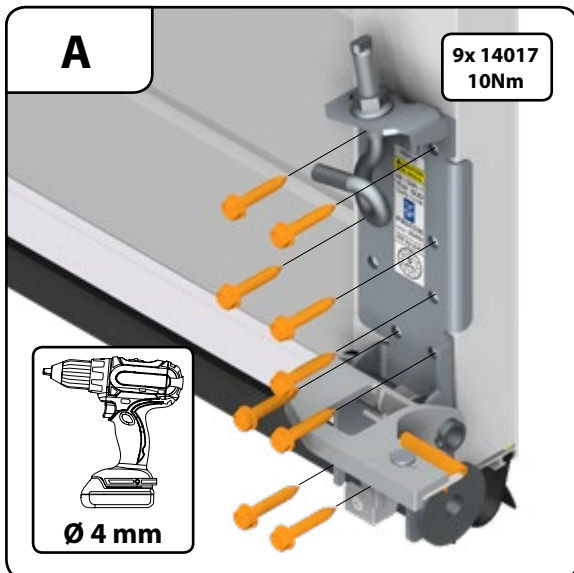
(3) will cut through the track rails, jamming them. This will also jam the door leaf. If an E-switch has been installed, this will ensure that the electrical drive is switched off.

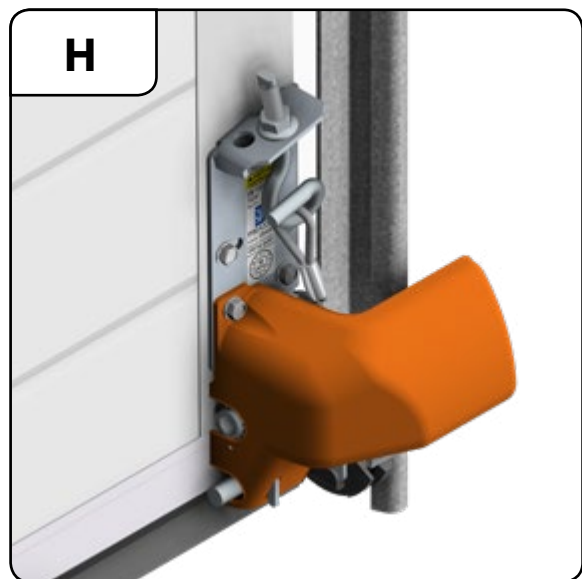
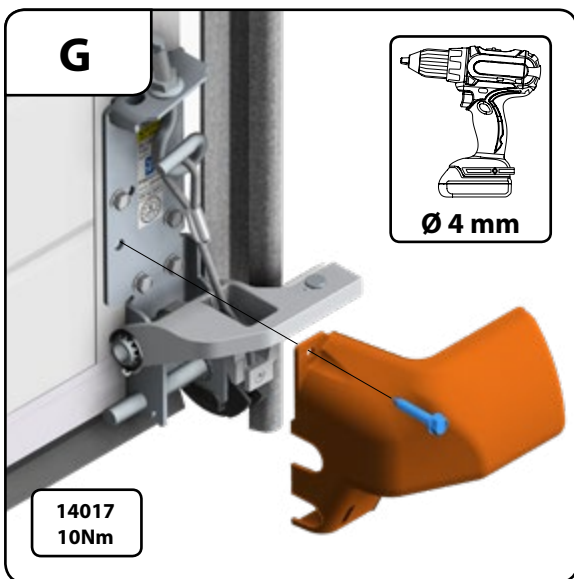
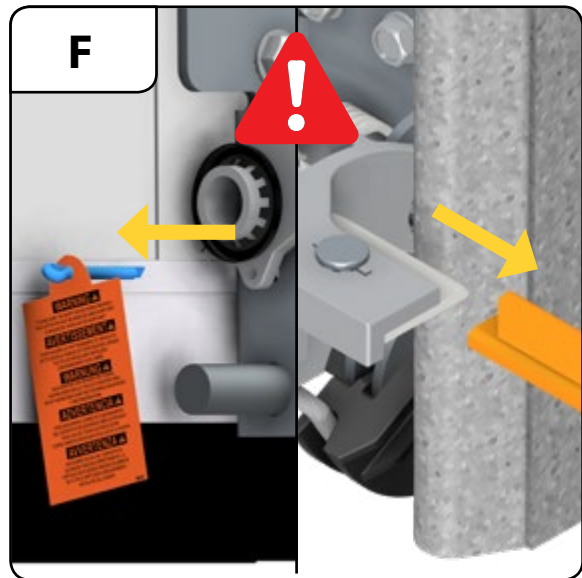
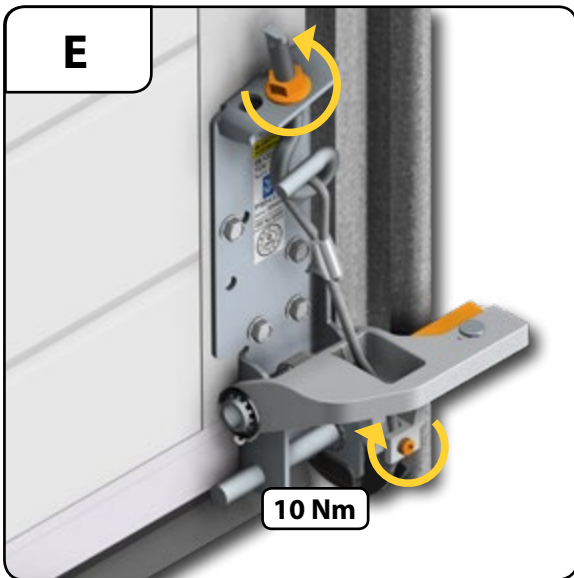
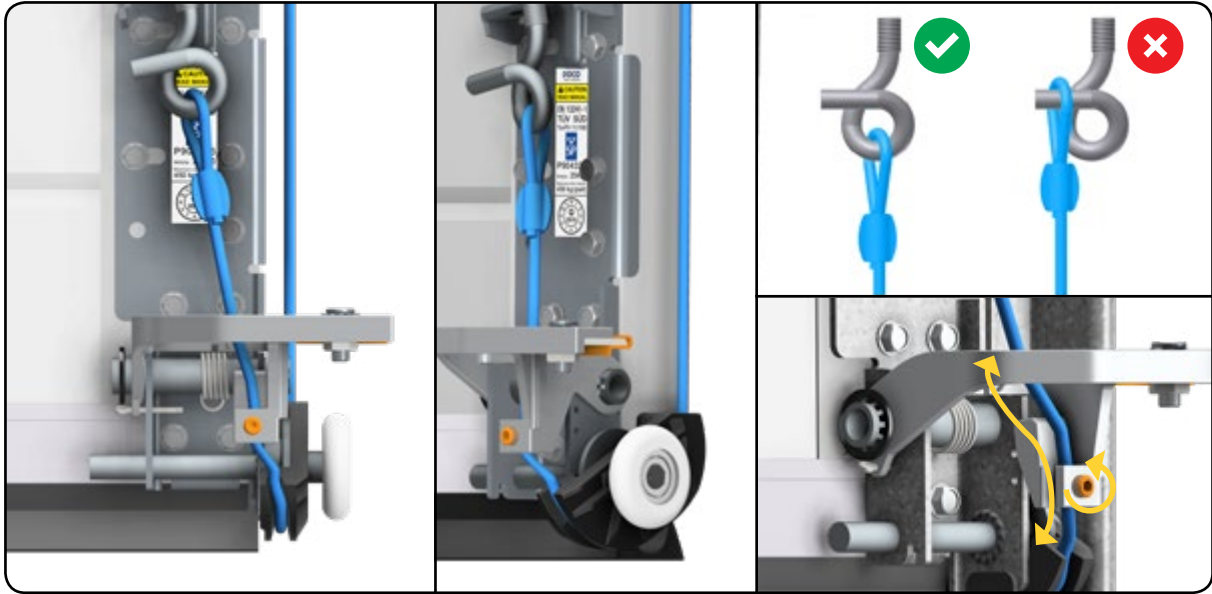


10. Installation

This installation manual describes the installation of a right-side cable break safety device. Every door will be installed with one right-side and one left-side cable break safety device.

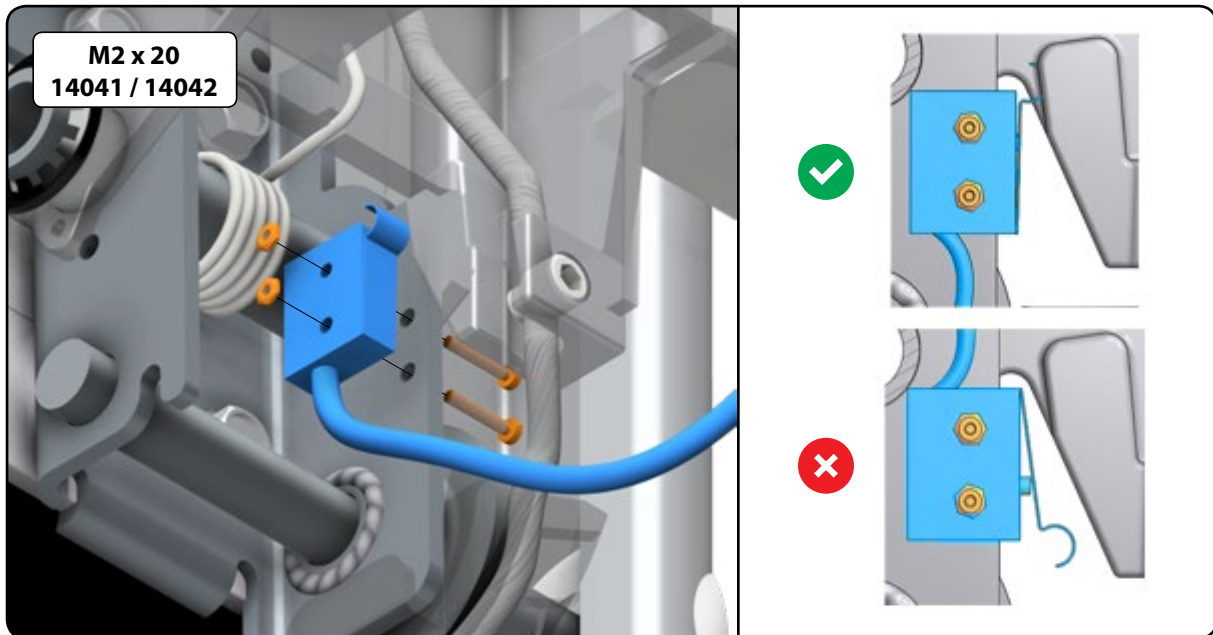
- A. Install the cable break safety device. The construction area must be flat.
- B. Install the roller into the insertion sockets (B). Install the lowermost door panel between the rail sets.
- C. Line up the door panel in such a way that the rail ends up in the middle of the knife.
- D. Remove the split pin (8). Check the rotation module (2) to ensure that it can move smoothly. Re-install the split pin (8). The rotation module is now locked open.
- E. Install the cable as shown in the diagram. Complete the door panel installation and tension the springs.
- F. Make sure the cable tension is equal on the left- and right-hand sides. You can adjust the cable tension using the adjustable nut (5). The cable should be able to move freely at its point of affixation (E). NOTE: Only release tension if this will cause unequal cable tension, which could cause the installation plate to protrude. Screw the set screw (7) tightly.
- G. Remove the knife protection (4) and split pin (8).
- H. Install the guard (9).





11. Installation of the E-switch (25445)

Required by E-operator. The cable break safety device must be fitted with an E-switch. This will turn off the motor in the event of a cable break. Install the switch as shown in the diagram below.



12. Testing / Maintenance

In principle, the cable break safety device should be maintenance-free. However, we do advise you to check for debris and to remove any debris on a regular basis.

13. Replacement after a cable break safety device has been activated

The replacement of cable break safety devices may only be carried out by qualified installation personnel. If, during replacement, the (overhead) door is not in a normal condition, you must ensure that the door blade is secured at all times, in such a way that the door blade cannot move downwards.

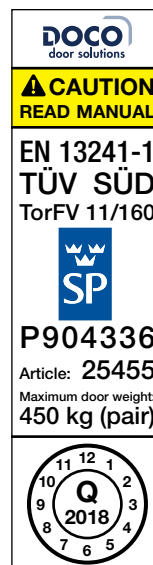
1. Secure the door blade, for example by using struts.
2. Now push the door blade further up, so that the blade separates from the rails. Temporarily secure the module with the split pin, in such a way as to jam the module.
3. Lock the door. Release the springs to take any tension off the cable.
4. Check all parts of the door for damage and replace any parts if necessary. Remove the burr in the rails if this is not to be replaced.
5. Replace both of the cable break safety devices and cables in accordance with the installation instructions.

14. Certificate number:

This cable break safety device has been approved by the Swedish testing institute SP and German institute TÜV.

SP: P904336

TÜV: TorFV 11/160



Subsidiaries

DOCO International B.V.

Nusterweg 96
6136 KV Sittard
The Netherlands
Phone +31 464200666
Fax +31 464526894
info@doco-international.com

**DOCO International
Central Europe S.R.O.**

Háj 352
798 12 Kralice na Hané
Czech Republic
Phone +420 582360100
Fax +420 582360300
info@doco-international.com

DOCO International Ltd.

Unit B3 Elvington Industrial Estate
Elvington
York
YO41 4AR
United Kingdom
Phone +44 1904607869
Fax +44 1904607299
sales@doco-international.co.uk

**DOCO International
Southern Europe S.L.U.**

Avenida Generalitat 55
P.I. "Can Met Sidru"
08530 La Garriga - Barcelona
Spain
Phone +34 938612825
Fax +34 938716592
ventas@doco-international.com

Sales Offices

SOMMER Automazioni s.r.l.

Localita Le Basse 33
38123 - Trento TN
Italy
Phone +39 0461263863
Fax +39 0461269247
italia@sommer.eu

SOMMER Polska Sp.z.o.o.

Al. Jerozolimskie 439
05 - 800 Pruszków
Poland
Phone +48 222302100
biuro@sommer-polska.pl

SOMMER Kft.

II. Rákóczi Ferenc út 277
1214 Budapest
Hungary
Phone +36 12780261
Fax +36 12764439
info@sommerkft.hu

**SOMMER Automation
& Radio Co., Ltd.**

Fengrao Road 388
201801 Shanghai, Malu County
Jiading District, Shanghai
China
Phone +86 2169153919
Fax +86 2169153155
info@sommer-china.com.cn

